

PROPERTY HIGHLIGHTS

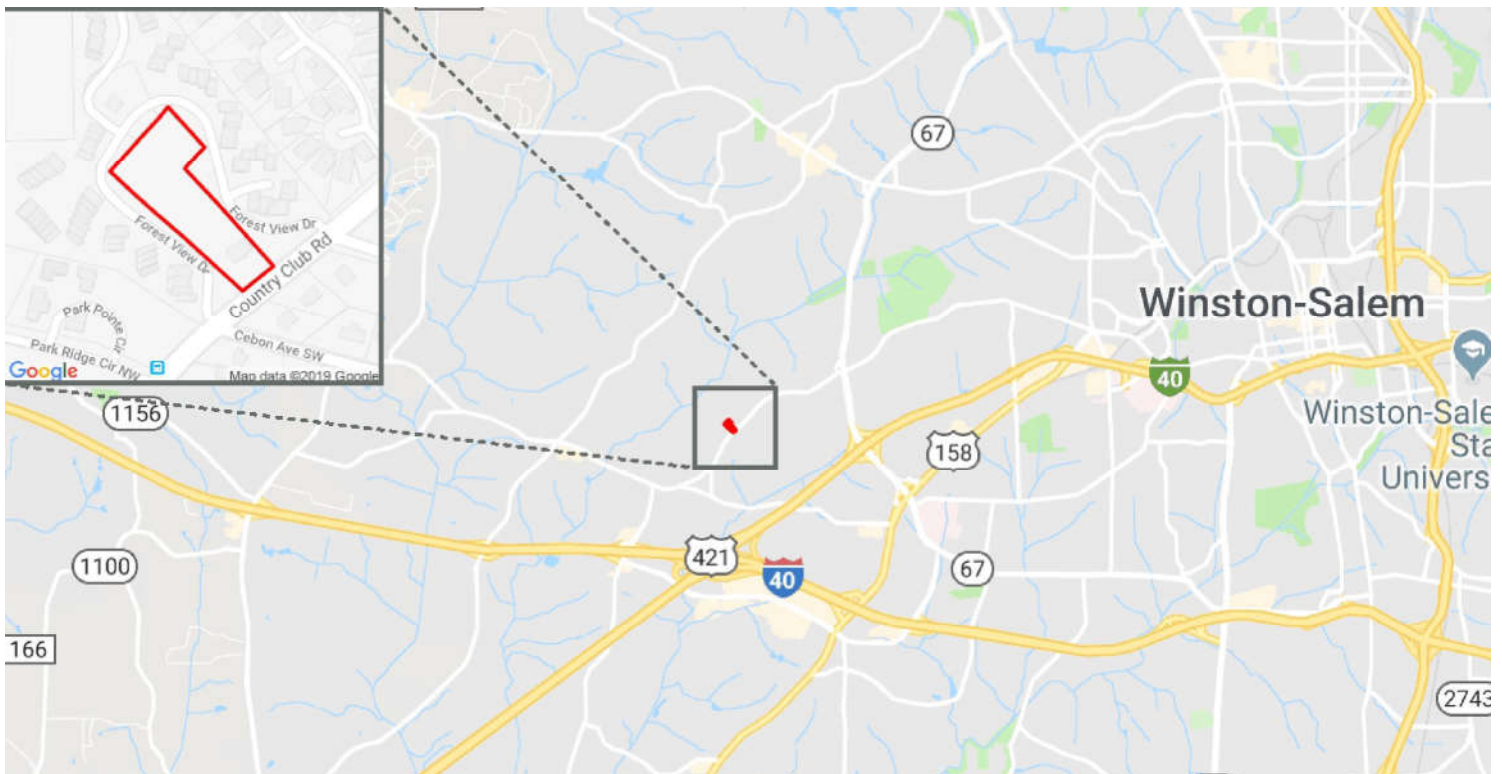
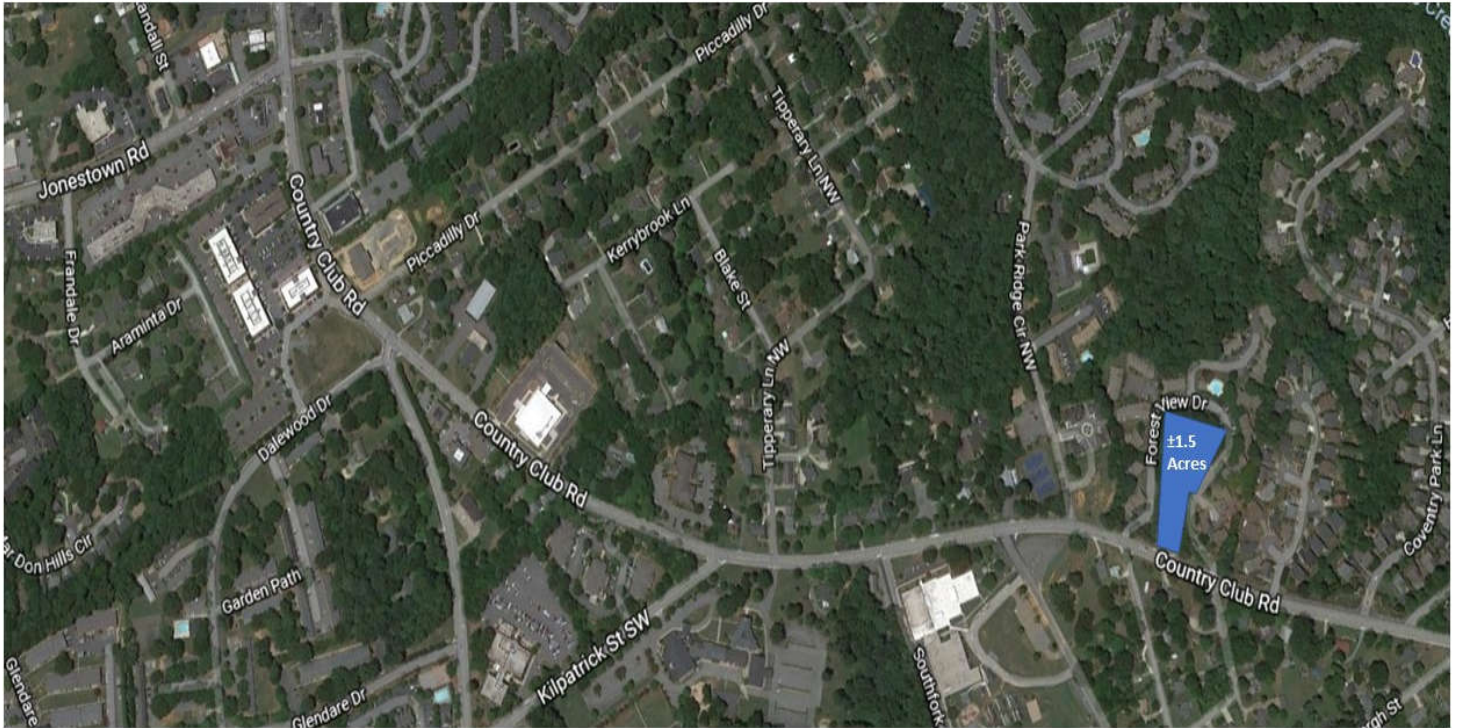
- ± 1.5 acres with great potential for new office or medical development.
- Prime Country Club Road location with easy access to Silas Creek Parkway and Jonestown Road.

Acres ± - 1.5 (comprised of two lots)
Zoning – LO-S
Tax PIN – 6805-82-5951
Tax Value - \$682,300
Sale Price - \$475,000 (below tax value)



Learn More About This Property

Cindy Christopher
E: Cindy@ChristopherCommercialNC.com
P: 336.926.1411



Christopher Commercial makes no warranty or representation to the accuracy of the information contained herein. The information is deemed to be reliable, however, is subject to verification prior to purchase or lease.